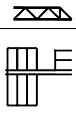
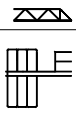



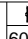


Bloque de contrapeso- Counterweight blocks- Gegengewichtsblöcke- Bloc de contrepoid- Blocco di contrappeso - Плиты противовеса

	70 m		65 m		60 m		55 m	
	A	B	A	B	A	B	A	B
	7	1	7	1	7	1	6	2
	20750 Kg		20750 Kg		20750 Kg		19500 Kg	


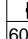


	50 m		45 m		40 m		35 m	
	A	B	A	B	A	B	A	B
	5	3	5	2	4	3	4	2
	18250 Kg		16750 Kg		15500 Kg		14000 Kg	




Mecanismos - Mechanisms - Antriebe - Mécanismes - Meccanismi - Приводы

56 Hp (42Kw) - INV
400 V / 50-60 Hz
HBG 300m S/R Ø16



		m/min										
			0--5	0--35	0--48	0--73	0--107	0--2,5	0--17,5	0--24	0--36,5	0--53,5
600 m		Kg	6000	6000	4000	2500	1250	12000	12000	8000	5000	2500
LEBUS		Kw	42	42	42	42	42	42	42	42	42	42

75 Hp (55Kw) - INV
400 V / 50-60 Hz
HBG 300m S/R Ø16



		m/min										
			0--5	0--44	0--60	0--85,5	0--118	0--2,5	0--22	0--30	0--42,7	0--59
600 m		Kg	6000	6000	4000	2500	1250	12000	12000	8000	5000	2500
LEBUS		Kw	55	55	55	55	55	55	55	55	55	55






	m/min	11 / 37 / 100		
	Kw	11		
	r.p.m.	0,3	0,6	0,9
	Kw	2 x 7,5		
	m/min	12 / 24		
	Kw	4 x 3		

56Hp (42Kw) - INV

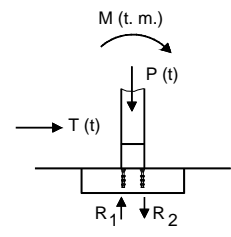
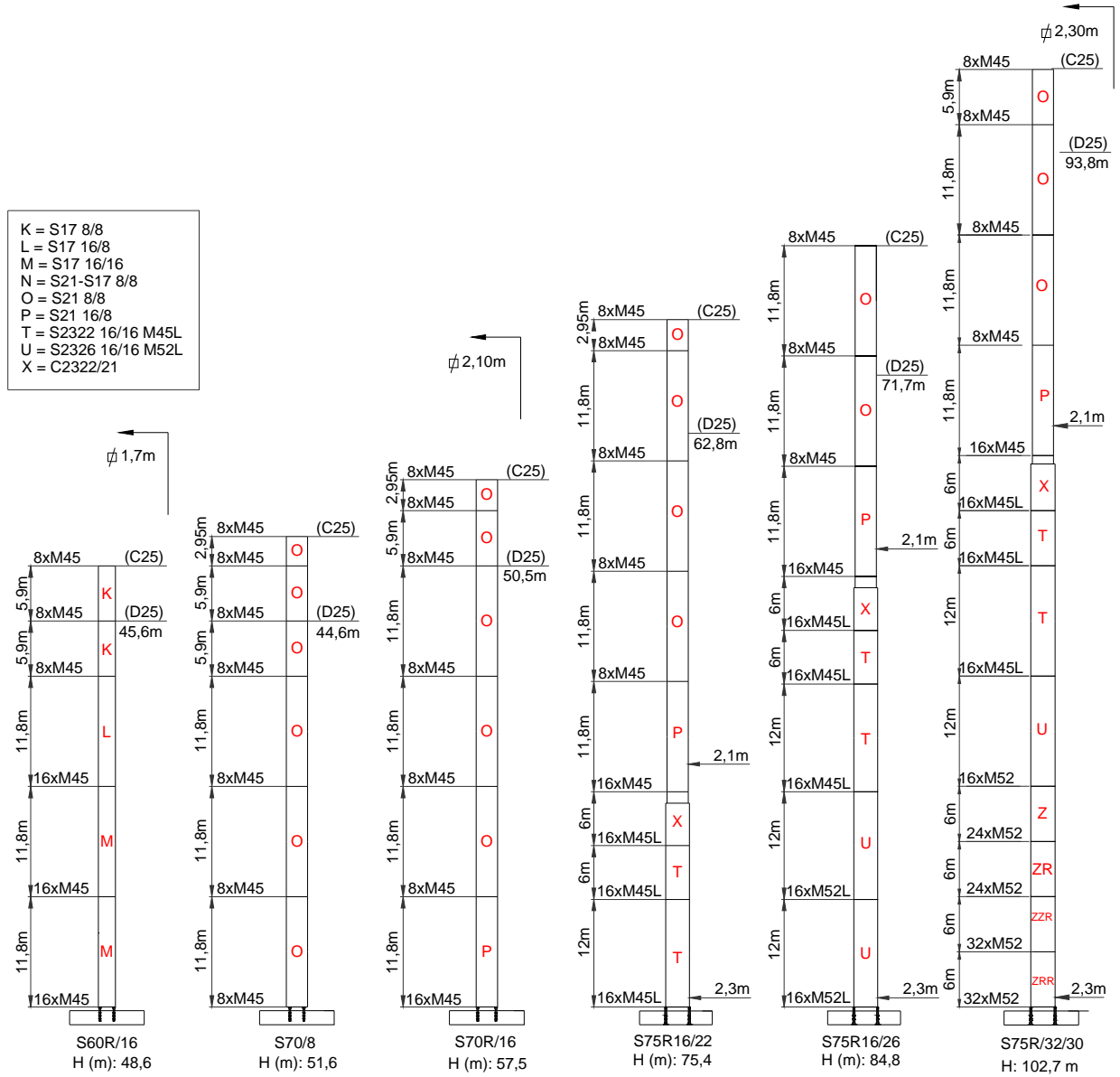
		400V 50Hz I _{max.} = 132A Fuse= 160A	TOTAL POWER 75 KVA	GENERATOR 138 KVA	100m	150m	200m
					4x50mm ²	4x50mm ²	4x50mm ²
2000/14/CEE 2005/88/CEE	2006/95 /CEE	* 480V 60Hz I _{max.} = 110A Fuse= 125A					

75Hp (55Kw) - INV

		400V 50Hz I _{max.} = 187A Fuse= 224A	TOTAL POWER 109 KVA	GENERATOR 200 KVA	100m	150m	200m
					3PX70+GND	3PX70+GND	3PX70+GND
2000/14/CEE 2005/88/CEE	2006/95 /CEE	* 480V 60Hz I _{max.} = 156A Fuse= 175A					

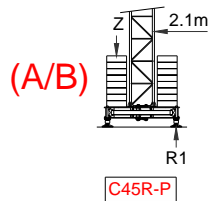
- * Opcional / Optional / Opzionale
-  Elevación / Hoisting / Heben / Levage / Sollevamento
-  Distribución / Trolleying / Katzfahren / Distribution / Ditrubuzione
-  Orientación / Slewing / Schwenken / Orientation / Rotazione
-  Traslacion / Travelling / Schienenfahren / Translation / Traslazione
-  Cable / Rope / Seil / Câble / Fune

FEM 1005-C25-D25 / EN 14439 - Mástil / Masts / Maste / Mat / Torre / Torre / Комплектация башни

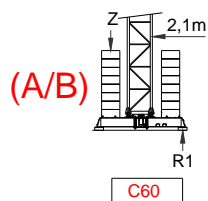


	M	O	P	T	U	ZRR	
C 25	H (m)	48,6	51,6	57,5	75,4	84,8	102,7
	M (T·m)	498,6	572,2	644,5	1056,8	1368,8	2028
	T (t)	9,3	9,3	9,9	20,9	25,4	30,5
	P (t)	65,7	76,9	81,3	93	112,3	125
	R ₁ (t)	220	188,2	213,3	341,2	440	668,2
	R ₂ (t)	-250	-226,7	-254	-387,7	-500	-730,7
D 25	H (m)	45,6	44,6	50,5	62,8	71,7	93,8
	M (T·m)	515,4	521	659,5	995,2	1316	2271,7
	T (t)	16,4	17,1	18,6	23,3	28,2	38
	P (t)	74,6	71,2	75,2	85,8	101,2	125,3
	R ₁ (t)	224,2	171,1	220,3	321	428,6	752,2
	R ₂ (t)	-261,6	-206,7	-257,9	-364	-479	-815

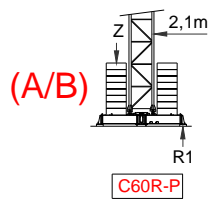
FEM 1005-C25-D25 / EN 14439 – Bloque lastre de base – Base ballast block –
Grundballastblöcke – Bloc de lest de base – Blocco di zavorra alla base



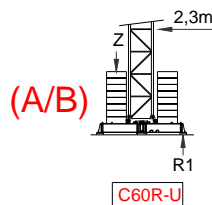
C25	H (m)	26 m	28,9 m	31,9 m	35 m	40,7 m	46,6 m	52,5 m	58,4 m
	R1 (t)	72,4 t	77,1 t	81,9t	86,9 t	97,3 t	122,7 t	160 t	202,9 t
	Z (t)	60 t	70 t	80 t	90 t	110 t	140 t	165 t	205 t
D25	H (m)	26 m	28,9 m	31,9 m	35 m	40,7 m	46,6 m	49,5 m	
	R1 (t)	73 t	78 t	82,8t	93,4 t	130,4 t	173 t	196,6 t	
	Z (t)	65 t	75 t	85 t	100 t	125 t	155 t	175 t	



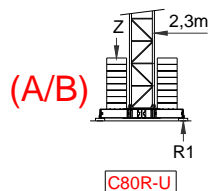
C25	H (m)	23,1 m	29 m	34,9 m	40,8 m	46,7 m			
	R1 (t)	52,3 t	59,4 t	65,7t	74,8 t	91,2 t			
	Z (t)	40 t	40 t	50 t	70 t	90 t			
D25	H (m)	23,1 m	29 m	34,9 m	40,8 m	43,7 m			
	R1 (t)	52,1 t	59,2 t	70,1 t	97,3 t	112,4 t			
	Z (t)	40 t	40 t	60 t	80 t	90 t			



C25	H (m)	26,2 m	32,1 m	35 m	40,9 m	46,8 m	52,7 m	55,7 m	61,6 m
	R1 (t)	54,7 t	61,8 t	66,1 t	73,7 t	89,6 t	116 t	130,5 t	162,5 t
	Z (t)	45 t	45 t	45 t	60 t	80 t	100 t	110 t	145 t
D25	H (m)	32,1 m	35 m	40,9 m	46,8 m	52,7 m			
	R1 (t)	62,7 t	69,2 t	95,8 t	126,2 t	160,8 t			
	Z (t)	45 t	50 t	70t	95 t	120 t			



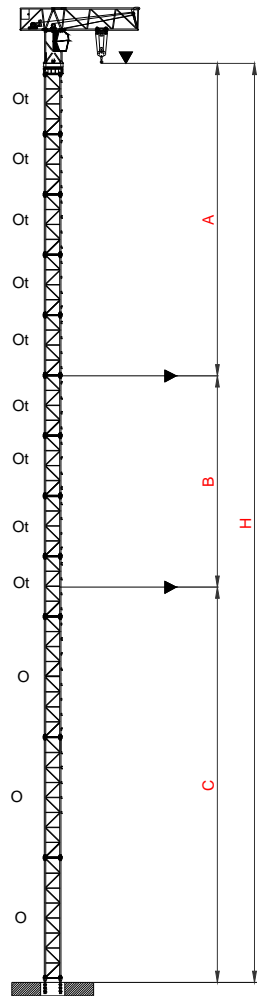
C25	H (m)	38,4 m	41,3 m	47,2 m	50,2 m	56,1 m	59 m	62 m	67,9 m
	R1 (t)	71,4 t	75,6t	93,9 t	106,3 t	133 t	148 t	163,7 t	197,8 t
	Z (t)	50 t	60 t	75 t	85 t	110 t	120 t	135 t	190 t
D25	H (m)	38,4 m	41,3 m	47,2 m	50,2 m	56,1 m	59 m		
	R1 (t)	85,5 t	99 t	128,8 t	145,1 t	180,8 t	200,3 t		
	Z (t)	60 t	70 t	90 t	110 t	150 t	165 t		



C25	H (m)	61,7 m	64,6 m	70,6 m	76,7 m	82,8 m			
	R1 (t)	140,3 t	147,9 t	178,7 t	207,8 t	240,1 t			
	Z (t)	80 t	90 t	120 t	155 t	220 t			
D25	H (m)	61,7 m	64,6 m	70,6 m					
	R1 (t)	163,7 t	194,8 t	229,6 t					
	Z (t)	115 t	155 t	190 t					

Proceso de trepado - Climbing - Kletterkrane - Telescopable - Sopralzo idraulico -
 Процесс наращивания крана

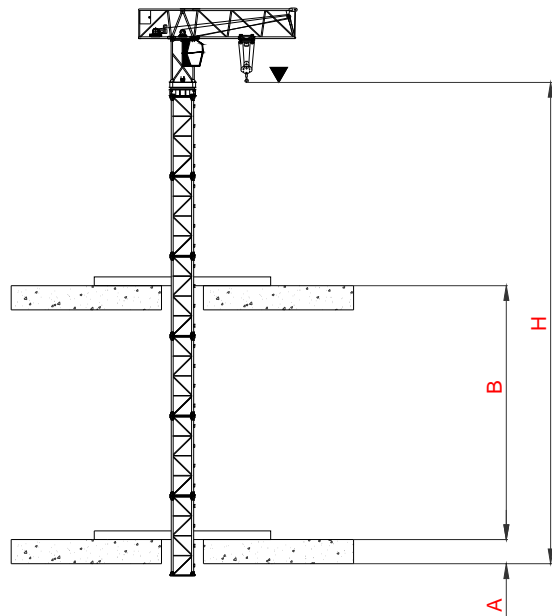
TREPADO EXTERNO / EXTERNAL CLIMBING / GEANKERTER KRAN /
 GRUE ANDRÉE / GRU ANCORATA




	MONOBLOCK Ot/2,95 m
A max.	30,6 m
B max.	17,7 m
C max.	39,8 m
Hi max.	51,6 m
H max. C+B+A	88,1 m
H max. C+B+B+A	105,2 m / (i)

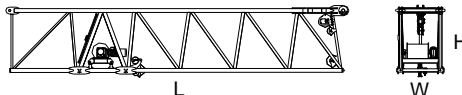
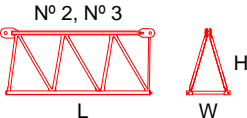
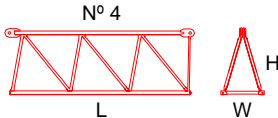
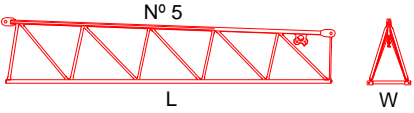
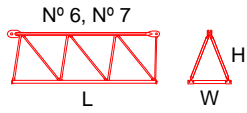
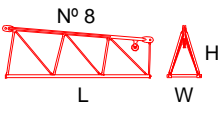
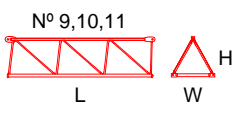
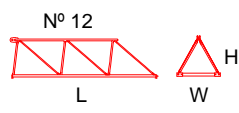
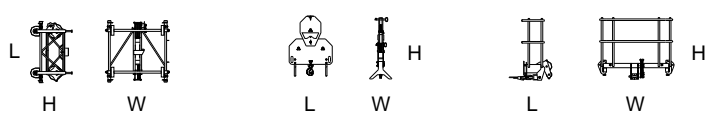
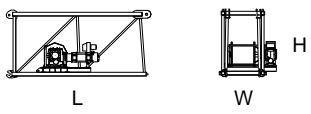
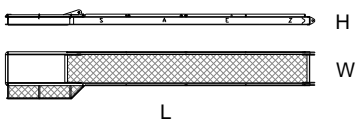

(i) Consultarnos - Consultateci - Consult us - Nous consulter - Auf anfrage


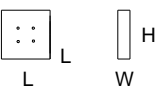
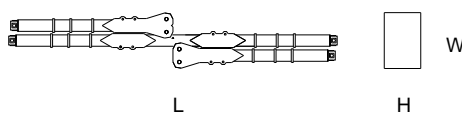
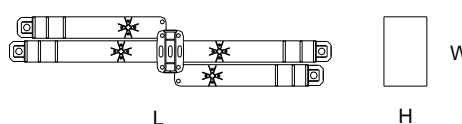
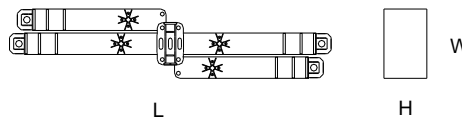
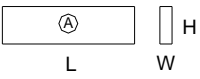

TREPADO INTERNO / BOTTOM CLIMBING CRANE / KLETTERKRANE IM GEBÄUDE / TÉLESCOPAGE SUR DALLES /
GRU CLIMBING

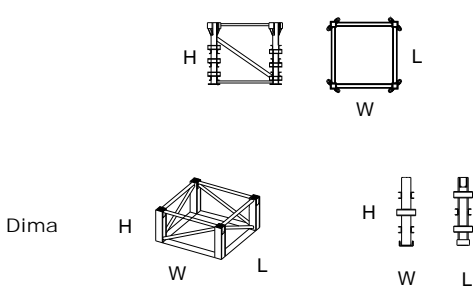
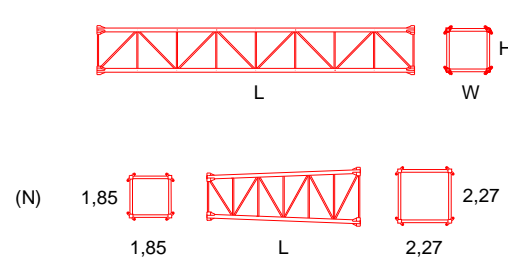
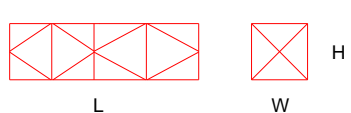


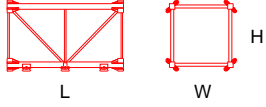
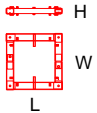
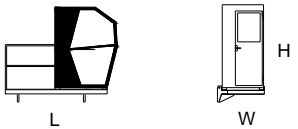
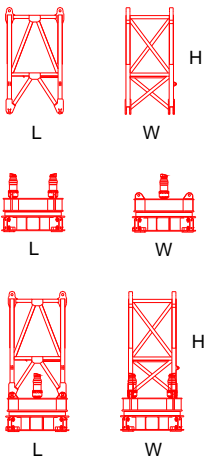
 Consultarnos - Consultateci - Consult us - Nous consulter - Auf anfrage

Dimensiones y transporte - dimensions and transport - Abmessungen und Transport - dimensions et des transports - dimensioni e trasporti - Размеры и транспорта

	L(m)	W(m)	H(m)	Peso(Kg)	
Pluma tramo primero / Jib heel section / Ausleger-Anlenkstück / Pied de fleche / Settore articolato di braccio 	11,8	1,63	2,36	5700	
Elemento intermedio de pluma / Intermediate jib section / Ausleger-Zwischenstück / Élément interm. de fleche / Spezzone di braccio N° 2, N° 3  H N° 4  H N° 5  H N° 6, N° 7  H N° 8  H N° 9,10,11  H N° 12  H	2 3 4 5 6 7 8 9 10 11 12	5,35 5,35 6,55 11,6 5,3 5,26 5,25 5,21 5,18 5,15 5,11	1,50 1,50 1,50 1,50 1,50 1,50 1,50 1,50 1,50 1,50 1,50	2,30 2,30 2,30 2,30 1,84 1,84 1,84 1,42 1,42 1,42 1,42	1645 1425 1510 2000 770 675 620 425 395 305 255
Gancho, Carro y Puntera / Hook, Trolley and jib head / Lasthaken - Laufkatze-Cabeça de Lança / Crochet - Chariot-Pointe de fleche / Gancio - Carrello e Punta freccia 	2,44 1,24 0,93	1,65 0,64 1,7	1,58 1,75 1,42	390 750 200	
Contrapluma 1 / Counter-jib 1 / Gegenausleger 1 / Contre-fleche 1 / Controbraccio 1 	5,00	1,90	2,32	2600	
Contrapluma 2 / Counter-jib 2 / Gegenausleger 2 / Contre-fleche 2 / Controbraccio 2 	11,94	1,8	0,6	3390	
Barandillas / Protection 				240	

	L(m)	W(m)	H(m)	Peso(Kg)
Bloque de contrapeso / Counterweight blocks / Gegengewichtsblöcke / Bloc de contrepoids / Blocco di contrappeso 	A 3,5 B 1,83	1,25	0,29	2750 1500
Bloque apoyo de base / Base support block / Grundballastblöcke / Bloc de appui de base / Blocco di appoggio alla base 	2	0,5	2	5000
Base C60-900 / base C60-900 / Hauptträger für fundamentkreuz C60-900 / Base C60-900 / Base C60-900 	8,66	1,47	0,96	8625
Base C60R-P/U / base C60R-P/U / Hauptträger für fundamentkreuz C60R-P/U / Base C60R-P/U / Base C60R-P/U 	9,01	1,94	1,35	13500
Base C80R-U / base C80R-U / Hauptträger für fundamentkreuz C80R-U / Base C80R-U / Base C80R-U 	11,8	1,94	1,35	17200
Bloque lastre de base / Base ballast block / Grundballastblöcke / Bloc de lest de base / Blocco di zavorra alla base 	4,5 5,8	0,51 0,4	0,9 1,5	5000 8000
Bloque apoyo de base / Base support block / Grundballastblöcke / Bloc de appui de base / Blocco di appoggio alla base 	2	0,5	2	5000

		L(m)	W(m)	H(m)	Peso(Kg)	
Elemento de empotre / Foundation anchor / Fundamentanker / Pieds de scellement / El annegare						
		S60/8	1,85	1,85	1,6	956
		S60/R16	1,85	1,85	1,6	1108
		S70/8	2,27	2,27	1,6	1122
		S70R/16	2,27	2,27	1,6	1274
		S75R16/20	0,35	0,35	1,6	1200
		S75R16/22	0,5	0,5	2	1400
		S75R16/26	0,5	0,5	2,4	2100
		S75R24/26	0,5	0,5	2,4	3400
		S75R24/30	0,8	0,8	3	3600
Dima		Dima	2,31	2,34	0,8	1650
Elemento de torre / Tower section / Turmstück / Elément de mât / Elemento di torre						
		K	11,8	1,85	1,85	4620
		K	5,9	1,85	1,85	2505
		K	3	1,85	1,85	1500
		L	11,8	1,85	1,85	5325
		O	11,8	2,27	2,27	4980
		O	5,9	2,27	2,27	2680
		O	3	2,27	2,27	1580
		P	11,8	2,27	2,27	5880
		N	5,9			2850
		X	6	2,27	2,29	4830
		T	6	2,27	2,29	4780
		T	12	2,27	2,29	9000
		U	6	2,31	2,34	6200
		U	12	2,31	2,34	11180
		Z	6	2,61	2,34	7825
		ZR	6	2,31	2,34	7925
Jaula de telescopaje tipo O 2.95 / Climbing cage type O 2.95 / Hydraulikbühne O 2.95 / Cage de telescopage type O 2.95 / Gabbia di montaggio O 2.95						
Completa / Full / Vollständige / Complete / completa		O-2.95	7,35	2,75	2,75	7000
						
Estructura / Steel frame / Struktur / Construction / Struttura		O-2.95				5400
Hidraulico y accesorios / Hydraulic and accessories / Hydraulik-und Zubehör / hydraulique et accessoires / idrauliche ed accessori						1600

	L(m)	W(m)	H(m)	Peso(Kg)	
<p>Tramo trepador Otr / Tower section Otr / Turmstück Otr / Élément de mât Otr / Elemento di torre Otr</p> 	2,95 11,8	2,27 2,27	2,27 2,27	1590 5102	
<p>Marco trepado externo / Tie-frame / Cadre d'encrage externe / Sopralzo con ancoraggio esterno</p> 		2,31	2,31 0,26	950	
<p>Cabina y soporte / Cabin and platform / Kabine und wartungs / Cabine et support / Cabina e supporto</p> 	3,00	1,15	2,35	820	
<p>Unidad de rotacion / Complete slewing unit / Drehbühne / Orientation / Rotazione</p> 		2,22	1,64 3,28	1950	
	K	2,00	2,00	1,83	5000
	O	2,32	2,32	1,83	6100
	K	2,00	2,00	4,43	6950
	O	2,32	2,32	4,43	8050



40" HC x 9 - HBG 36 m



x 8 - HBG 36 m